



DOWNRIGGER WEIGHTS

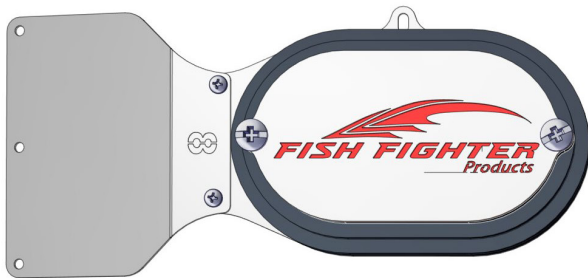


208-580-1904
www.fishfighterproducts.com

DOWNRIGGER WEIGHTS

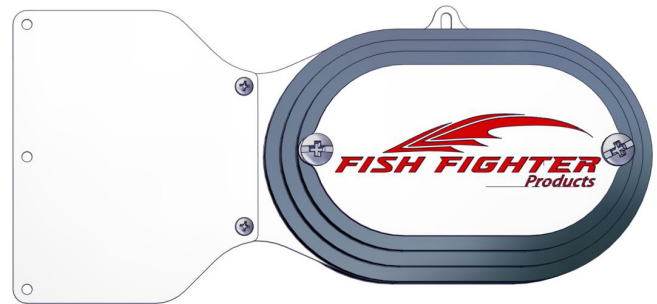
PART #	DESCRIPTION	DIMENSIONS
ITD5172	8 lb. Downrigger Weight	10 ⁵ / ₈ " × 4 ³ / ₄ " × 1 ¹¹ / ₁₆ "
ITD5224	10 lb. Downrigger Weight	11 ⁵ / ₁₆ " × 5 ¹ / ₄ " × 1 ¹¹ / ₁₆ "
ITD5225	12 lb. Downrigger Weight	11 ⁵ / ₁₆ " × 5 ¹ / ₄ " × 2 ³ / ₁₆ "
ITD5227	14 lb. Downrigger Weight	12 ¹ / ₈ " × 5 ³ / ₄ " × 2 ³ / ₁₆ "

ITD5172



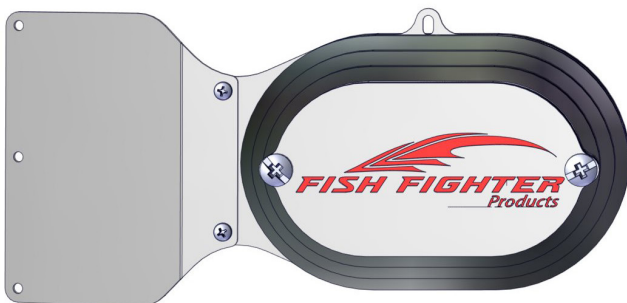
1lb. - 8 lbs.

ITD5224



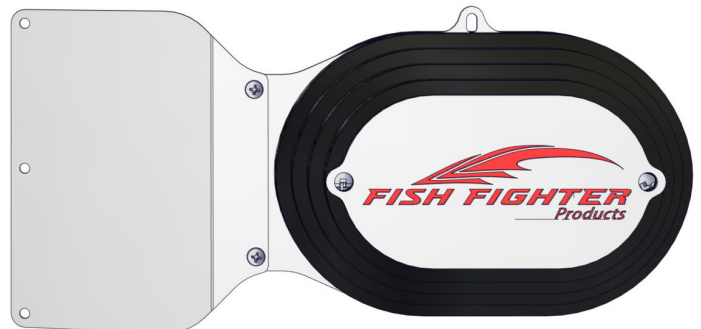
1lb. - 10 lbs.

ITD5225



1lb. - 12 lbs.

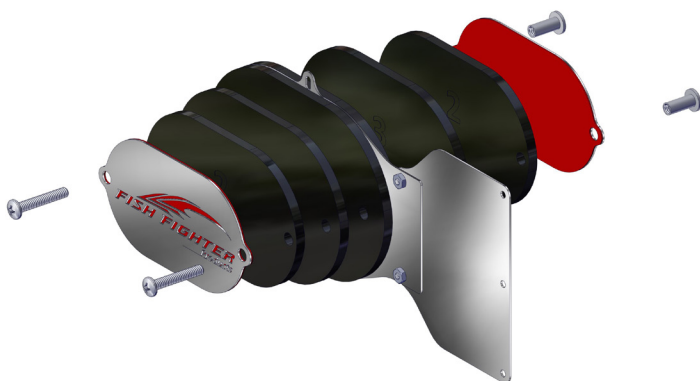
ITD5227



1lb. - 14 lbs.

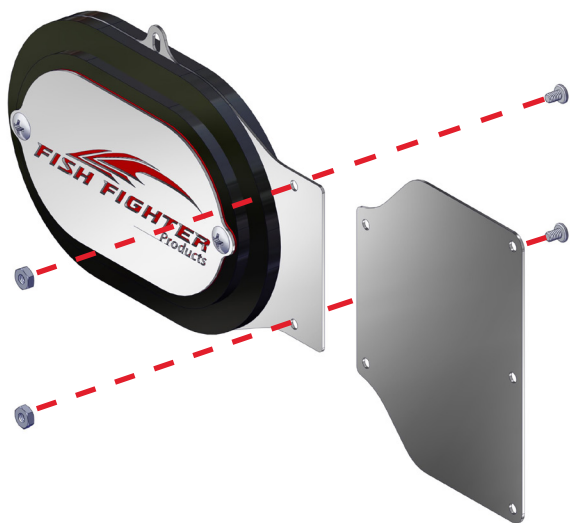
Patent Pending

Variable Weight System™



The FFP Variable Weight System™ allows you to adjust your FFP Downrigger Weight to fit any current condition. The Downrigger Weight has been designed as a series of plates so adding or removing weight is as simple as loosening two screws and adding or removing a weight plate.

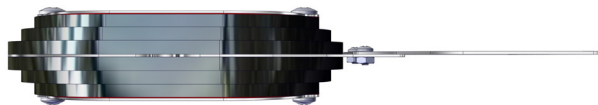
Tail Rudder Removal and Usage



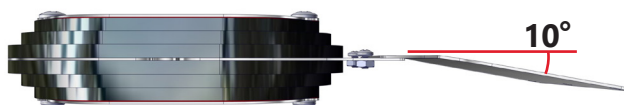
Removing your FFP Downrigger Weight Tail Rudder is simple, remove the two machine screws on the tail rudder assembly, remove the tail rudder, then install the desired rudder. Each FFP Downrigger Weight comes with both a straight rudder and a 10° angled rudder.

The rudder configuration will change the drift location of the dropped FFP Downrigger Weight. The straight rudder will drop down while the 10° angled rudder will drift further from the boat. See **Fig. 1-1**

Top View with Straight Rudder



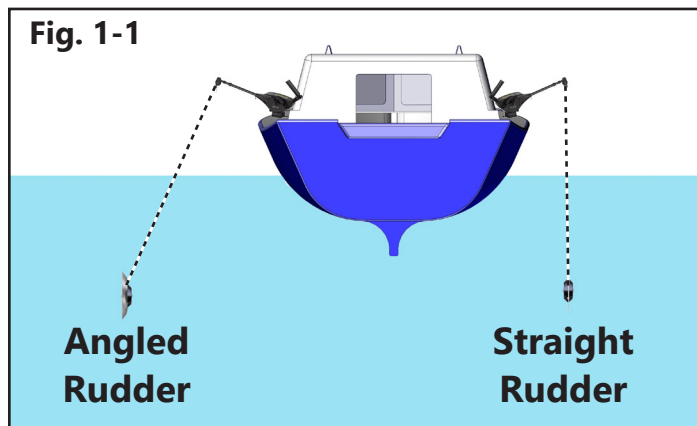
Top View with Angled Rudder



Three Fishing Line Connection Points



Fig. 1-1





DOWNRIGGER WEIGHTS

**For full warranty information visit
www.fishfighterproducts.com**

**Fish FighterTM Products Support
8:00 am to 5:00 pm MST
Monday through Friday
1-208-580-1904
sales@fishfighterproducts.com**